



Introduction to Digitally-Enhanced Integrated Care: The C3-Cloud Approach

Sarah Lim Choi Keung



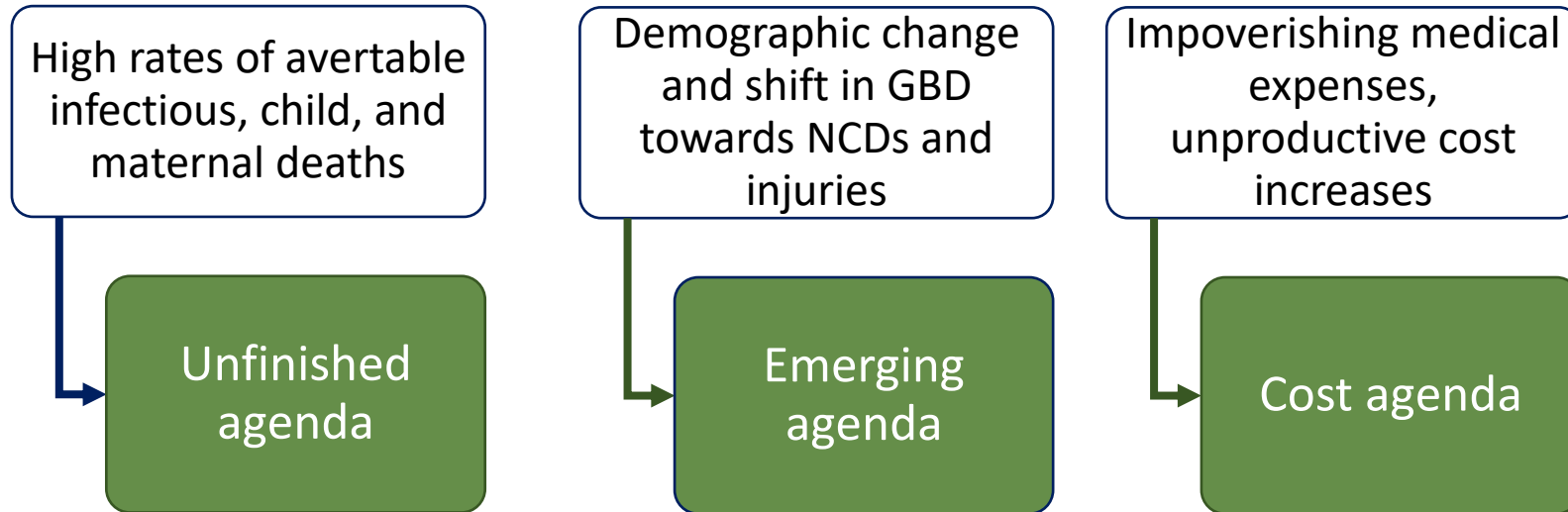
This project has received funding from the European Union's Horizon 2020 research and innovation programme under grant agreement No 689181



CONTEXT

- Chronic diseases are the main reason for **poor health and restricted activity**,
 - Affect 30% of Europe's population.
 - Account for 70% of healthcare expenditure in Europe.
- Ageing is associated with increased accumulation of multiple chronic conditions known as ***multi-morbidity***
 - Includes a growing number of functional and cognitive impairments.
 - More than 50% of all older people have *at least 3 chronic conditions*, and a significant proportion *has 5 or more*.

2015-2035: THREE DOMAINS OF HEALTH CHALLENGES



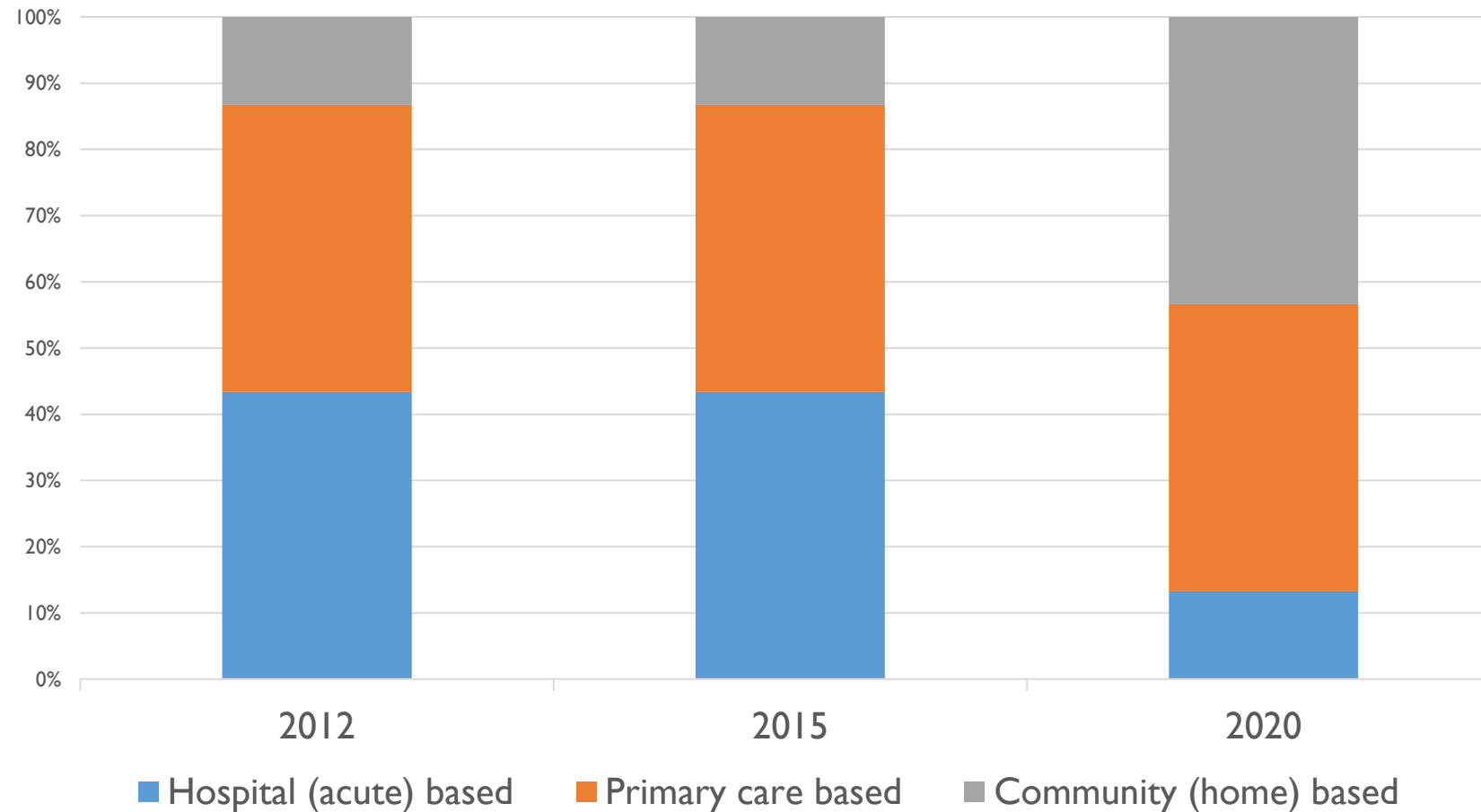
Source: The Commission on Investing in Health

THE LANCET GLOBAL HEALTH 2035

THE CHALLENGE

- Clinical management of patients with multi-morbid chronic conditions is much more complex and time-consuming for the **healthcare system**.
- Further burden on **social care services** to enable such patients perform everyday activities
 - Supported by informal carer or home / community care services.
- Long-term care needs experience shortcomings, especially **within and between** health and social care delivery organisations.

In which setting care is delivered for chronic patients*?



**The Challenge:
Transformation
of care delivery**

*European Innovation Partnership on Active and Healthy Ageing, Action Plan on 'Replicating and tutoring integrated care for chronic diseases, including remote monitoring at regional levels'.

http://ec.europa.eu/research/innovation-union/pdf/active-healthy-ageing/b3_action_plan.pdf

DIGITAL HEALTHCARE CAN TRANSFORM CARE DELIVERY



towards an enhanced integrated care approach

WHY DIGITAL?

Healthcare is Transforming through Technology

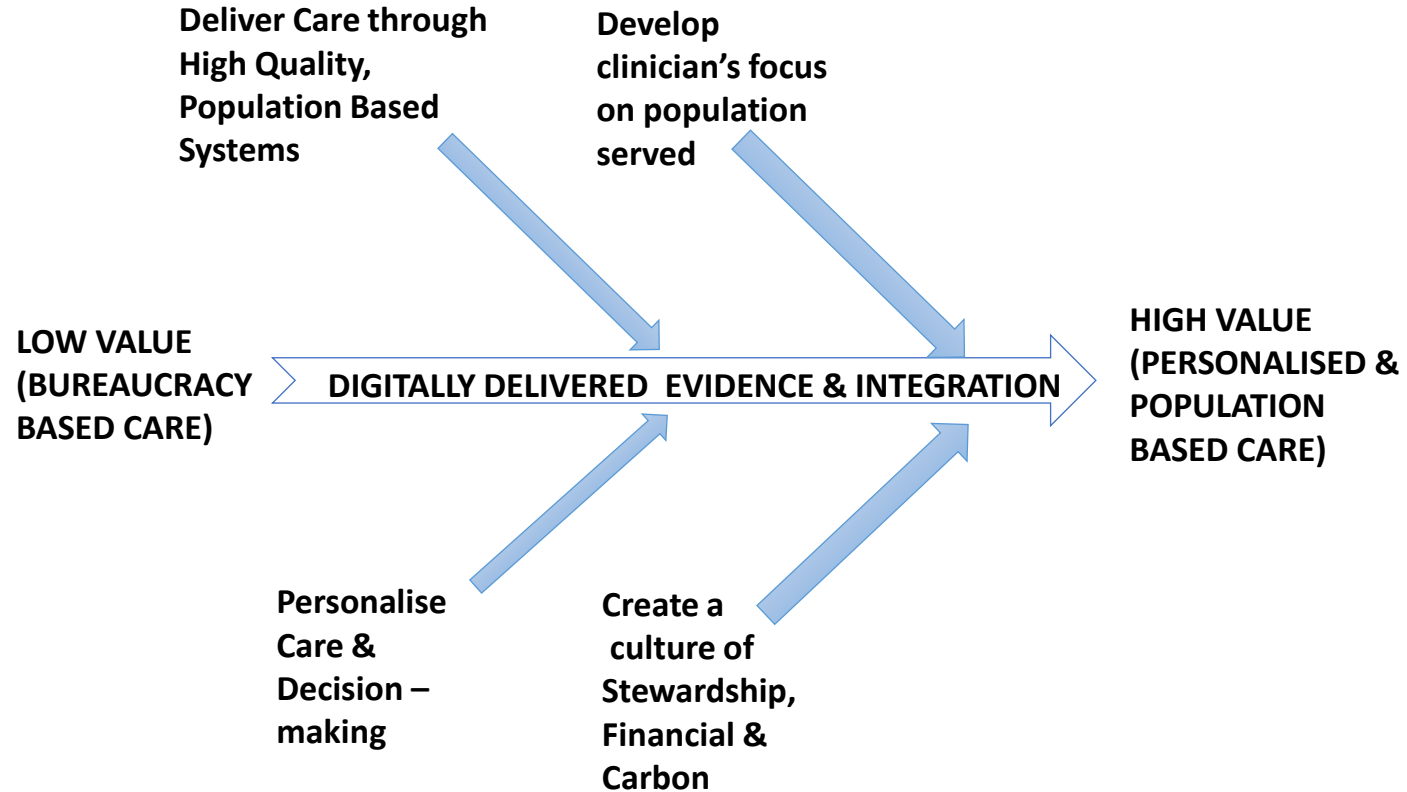
- linked **electronic records** to support the delivery of care;
- **harnessing data** to support research and real-time public health **decision making**;
- **integrated decision support systems** which aim to maximize **effectiveness and patient safety**;
- tools for delivering **remote monitoring** and **self-management**
- online consultations and interventions, supporting upstream **models of health care**, away from the hospital;
- wearable and implantable devices, providing **new ways to capture and monitor physiological parameters**.



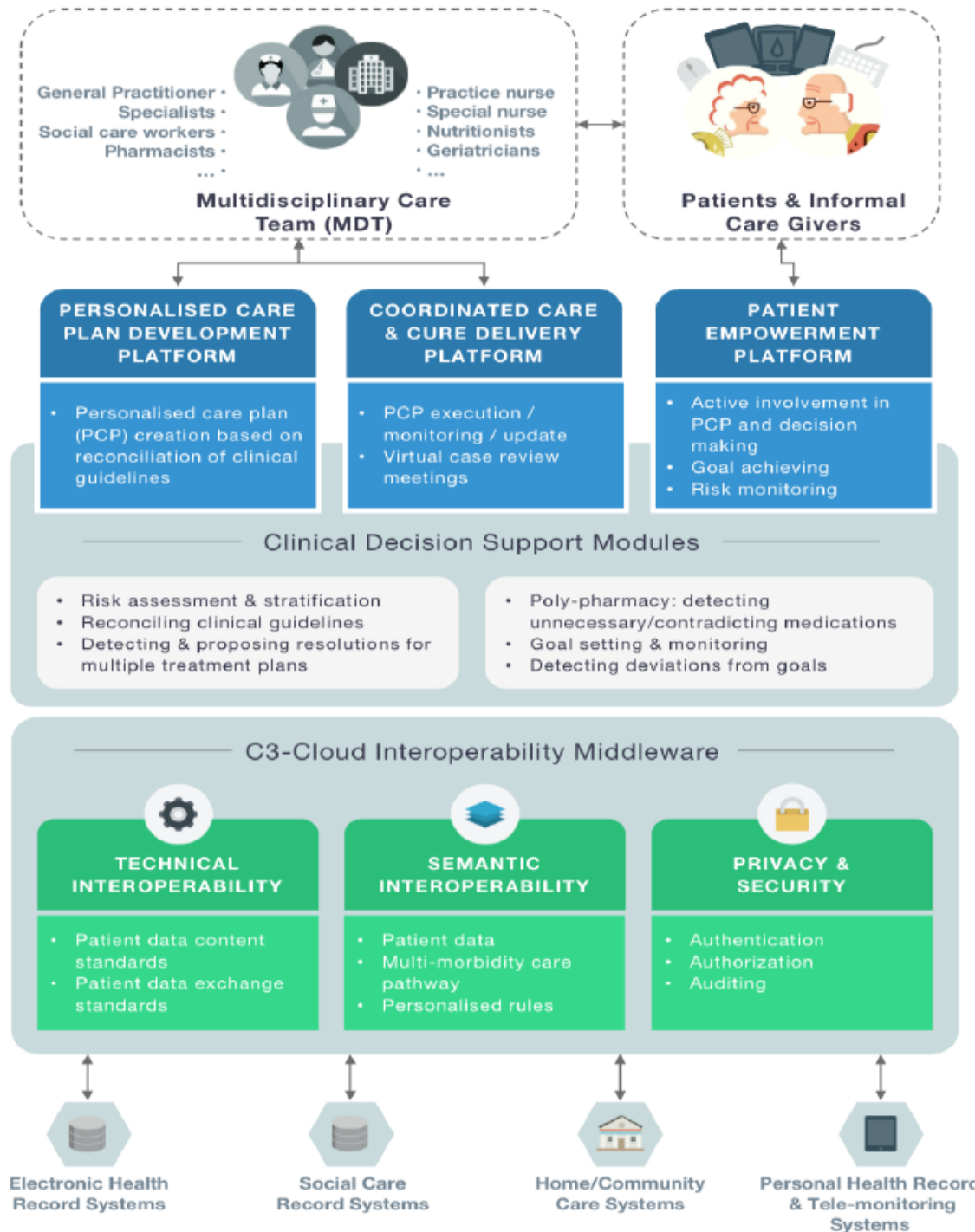
DIGITALLY ENHANCED INTEGRATED CARE

- At present, it is suggested that there is **no 'single model'** that can be applied universally to achieve care services for people with complex needs.
- **Integrated Care**
 - The management and delivery of health services so that citizens receive a continuum of preventive and curative services,
 - according to their needs over time
 - and across different levels of the health system
 - Can potentially provide such a co-ordinated approach.
- Digitally-enabled approaches can provide more adaptive and radical solutions to the provision of integrated care.

DIGITALLY ENHANCED INTEGRATED CARE: THE NEW MODEL

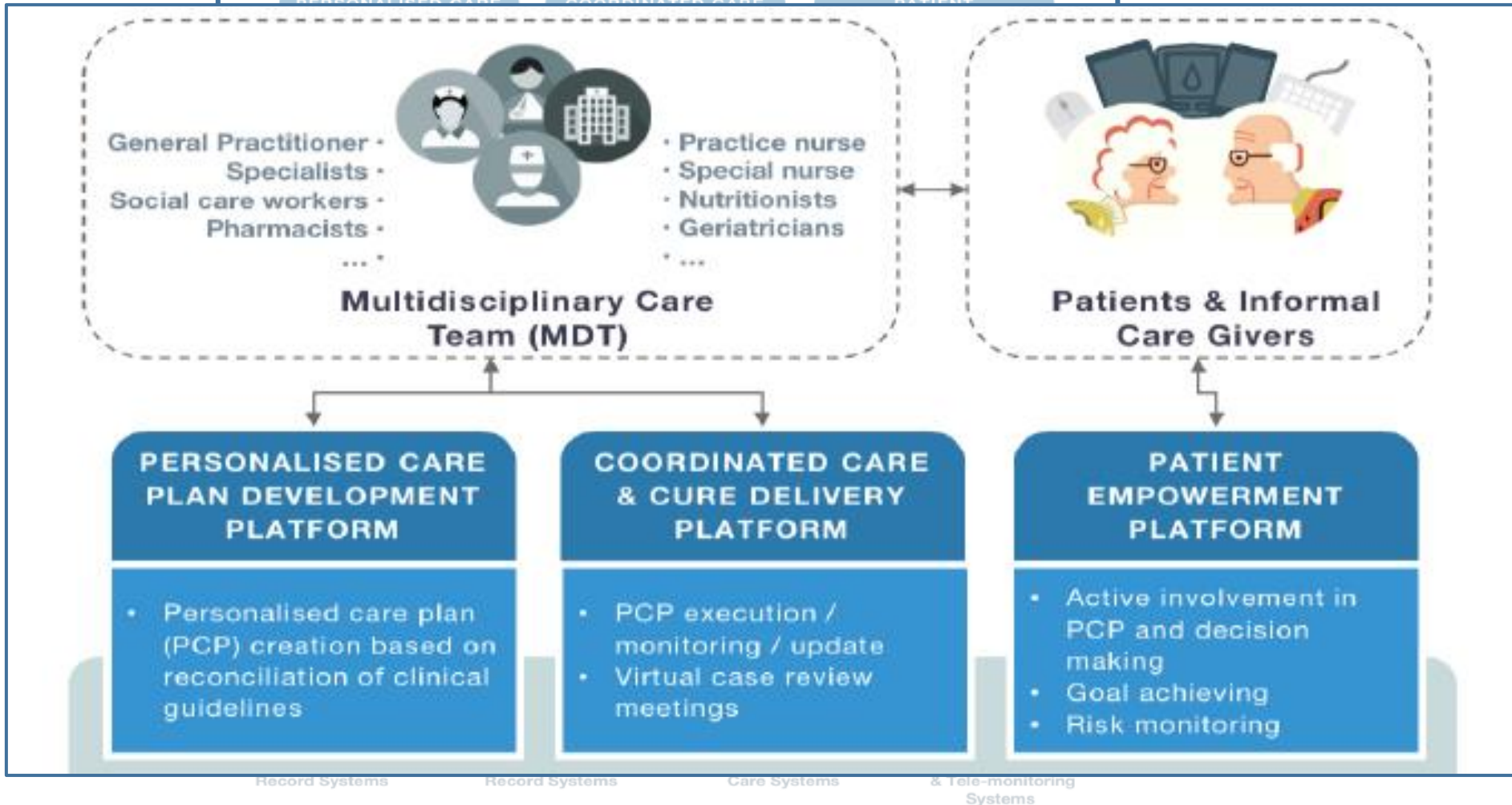
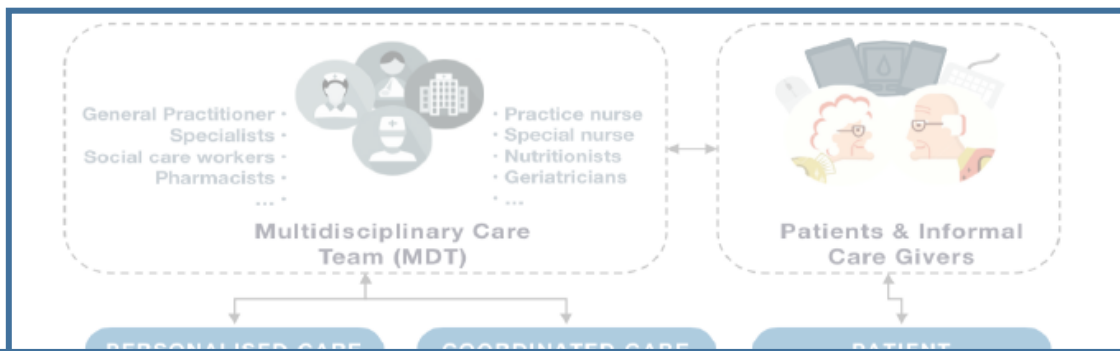


Source: Sir Muir Gray, Joint National Director, NHS Right Care



C3-CLOUD:

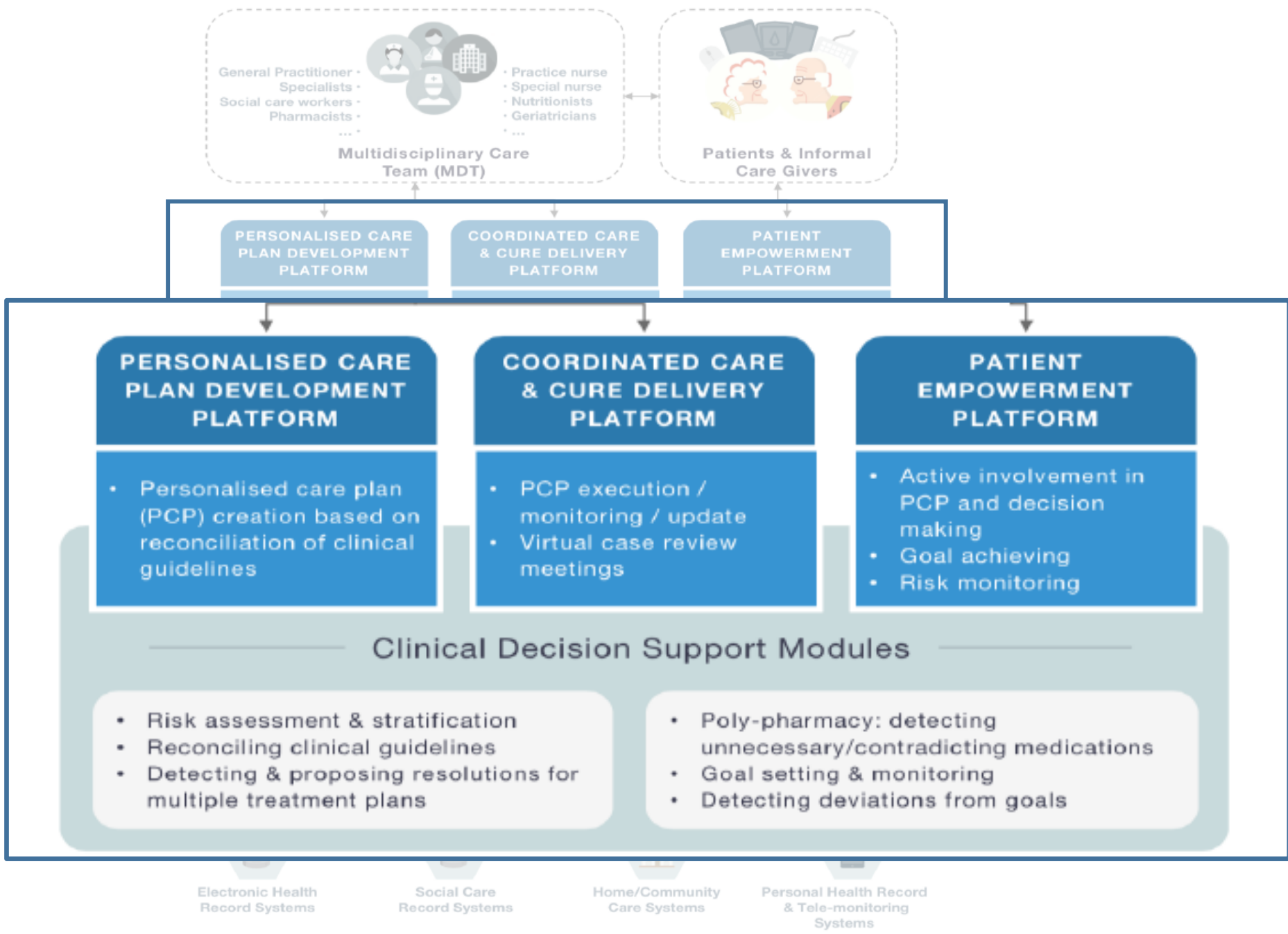
IMPLEMENTING
INTEGRATED CARE



C3-CLOUD

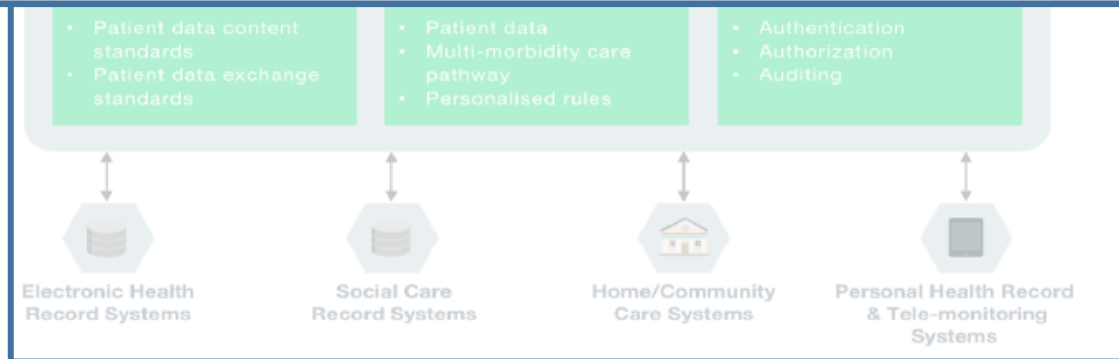
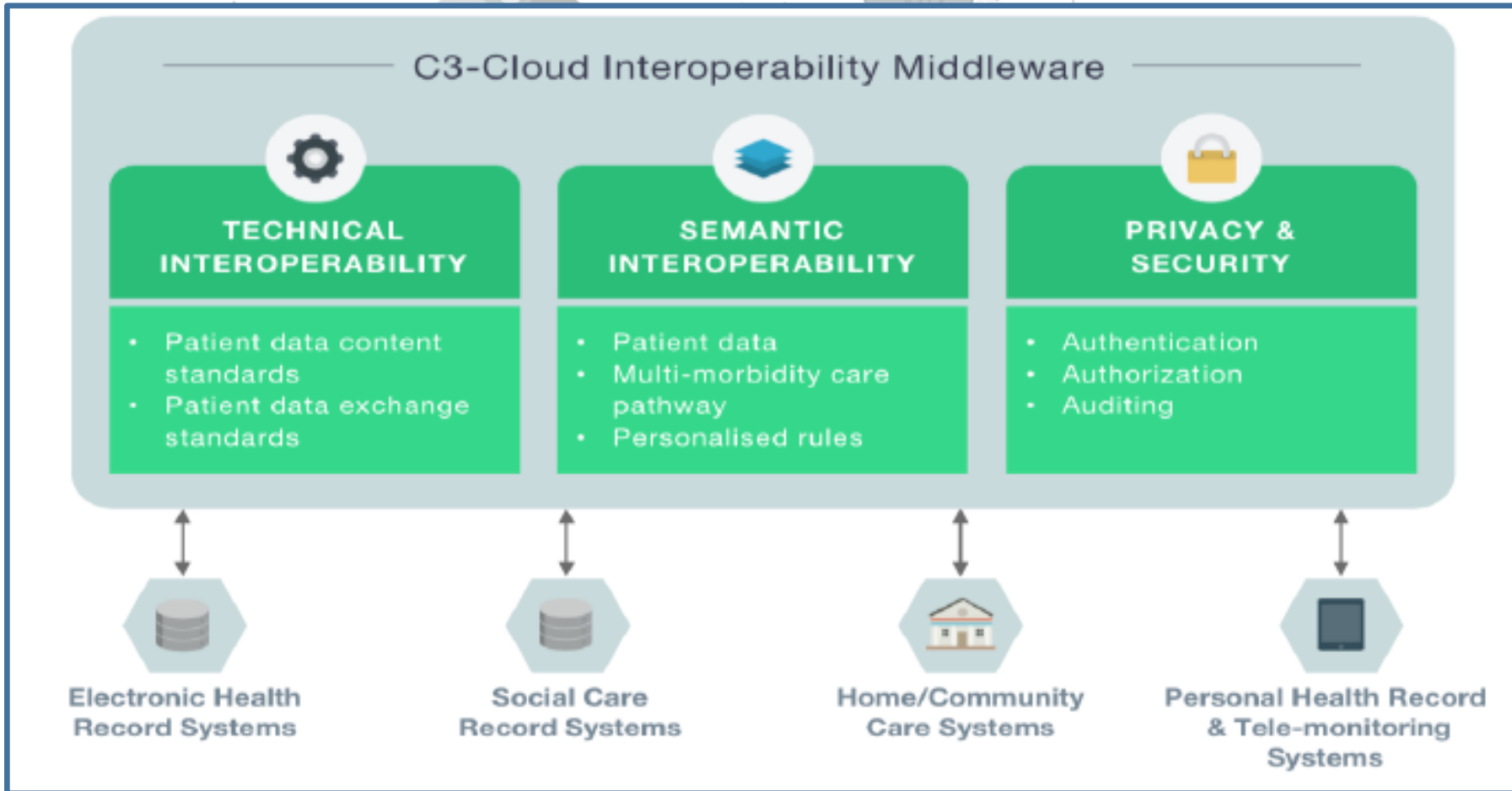
C3DP AND PEP

C3-CLOUD



C3-CLOUD

CLINICAL
DECISION
SUPPORT



C3-CLOUD

TIS, SIS AND SPS

SUMMARY

- The impact of digital technology and information can be transformative for healthcare.
- Digitally-enabled integrated care the way forward: The benefits to individuals and society are multiple. People's health journeys are better understood and appropriate lifestyle choices can be better tailored and promoted to the individual.
- In the case of chronic conditions, disease management can be more effectively supported and avoidable deaths can be prevented.
- C3-Cloud provides novel, flexible, and generic digital tools for more advanced integrated care options in Europe

THANK YOU



Any questions?

